

## Ragno 35 metri con verricello



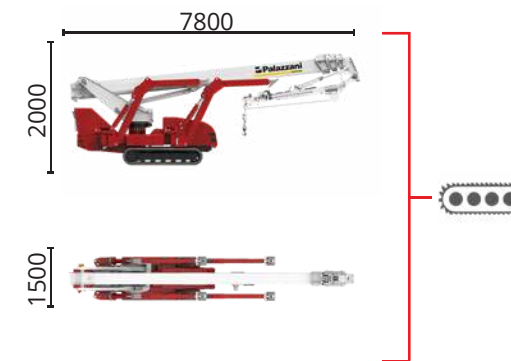
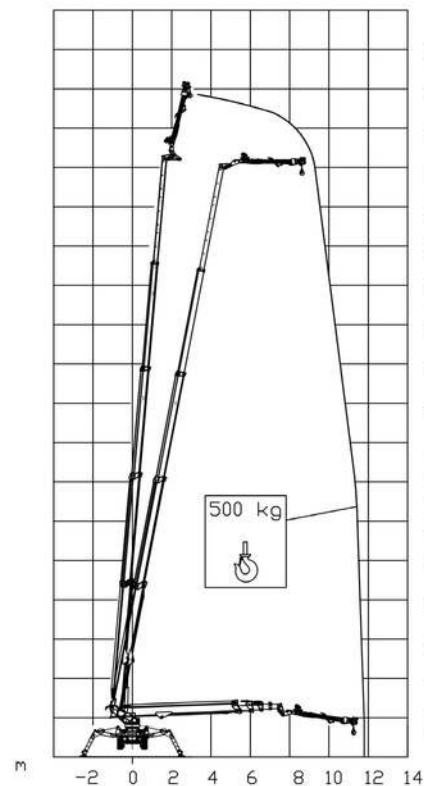
**BI-ENERGY**




Diesel  
18,2 kW



Single-phase  
Electric motor  
230VAC - 3 kW



TSJ 35.1/C  33,7 m 11,8 m 500 kg 660° 180x70 cm 90°+80° 2,68-5,26 m 23% 36% 1,8 km/h 7100 kg 47 kN 2,44 kN/m<sup>2</sup> 5,06 kN/m<sup>2</sup>

Available version:

**BI-ENERGY** (DIESEL+AC)

**ECO** (AC+BATTERY)



CE NC 819 A 22



# HOIST

VENDITA E NOLEGGIO DI SISTEMI AD ALTA QUOTA

**+39 335 8355930**

**081 18962737**

Characteristics and technical data are informative only and subjected to change without notice.

[piattaformaerehoist.it](http://piattaformaerehoist.it)

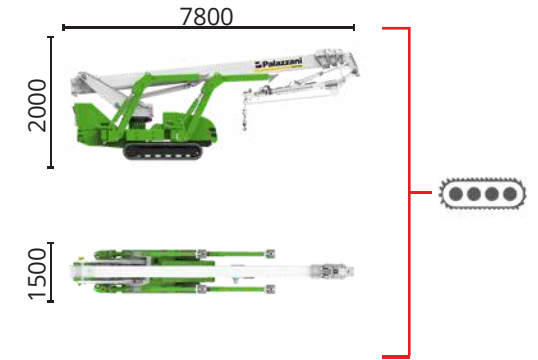
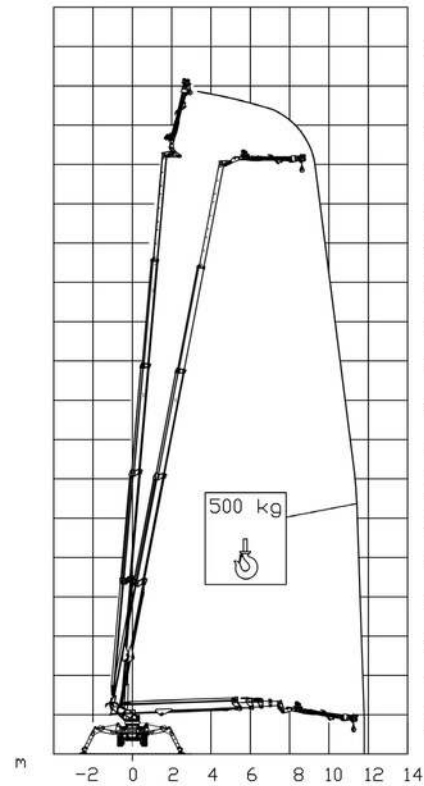
# HOIST


VENDITA E NOLEGGIO DI SISTEMI AD ALTA QUOTA



**ECO**

- Single-phase Electric motor 230 VAC - 16 kW
- Lithium iron phosphate battery LiFePO4 48 V - 330 Ah
- Type 2 plug charge



TSJ 35.1/C  33,7 m 11,8 m 500 kg 660° 180x70 cm 90°+80° 2,68-5,26 m 23% 36% 1,8 km/h 7100 kg 47 kN 2,44 kN/m<sup>2</sup> 5,06 kN/m<sup>2</sup>

Available version:

**BI-ENERGY** (DIESEL+AC)

**ECO** (AC+BATTERY)



NC 821 A 22



# HOIST

VENDITA E NOLEGGIO DI SISTEMI AD ALTA QUOTA

**+39 335 8355930**

**081 18962737**

Characteristics and technical data are informative only and subjected to change without notice.

[piattaformeareehoist.it](http://piattaformeareehoist.it)