

HOIST GMBH srl

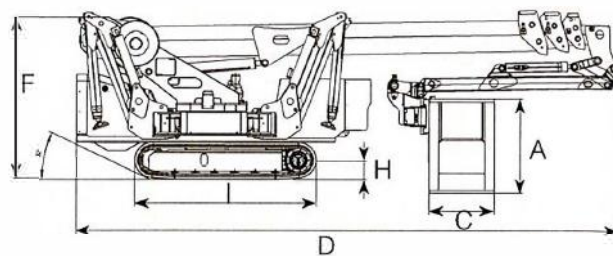
Via Cuma 28, 80100 Napoli

Partita IVA 05837890630

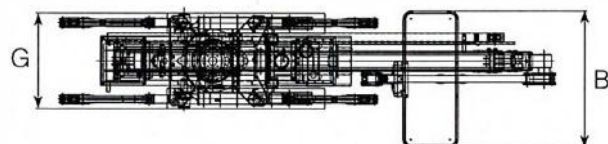
Tel. 081/18962737

www.piattaformeareeehoist.it - hoistsrl@hotmail.com

| PERFORMANCE | |
|-------------------------------|--------------|
| WORKING HEIGHT | 26.20 m |
| HORIZONTAL OUTREACH (120 KG.) | 13.50 m |
| UP AND OVER CLEARANCE | - |
| CAGE CAPACITY | 230 Kg |
| MOVABLE JIB | 180° |
| CAGE ROTATION | 180° |
| TURRET ROTATION | 360° |
| GRADEABILITY | 30% |
| SLOPE ANGLE (α) | 25° |
| TRAVEL SPEED | 1.0-2.0 Km/h |

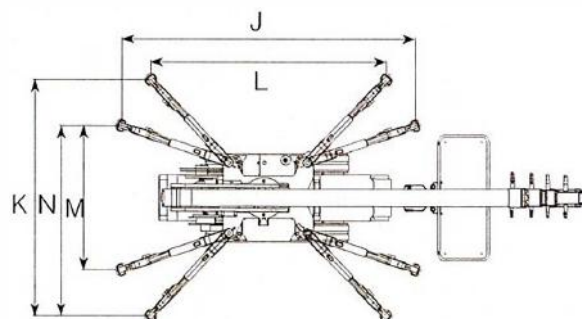


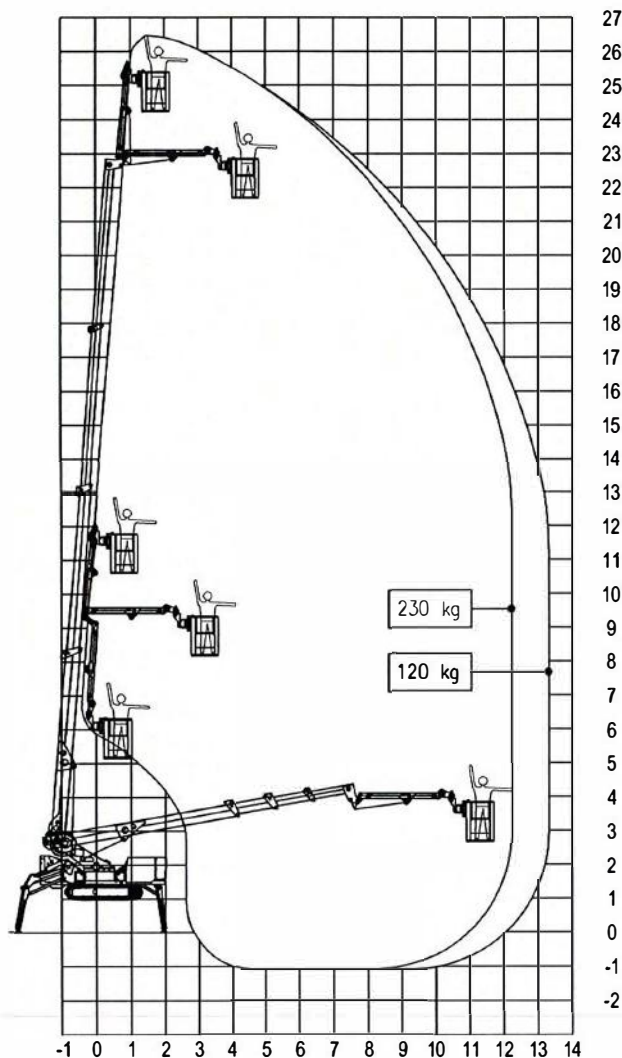
| MEASURES | |
|-----------------------------------|---------------|
| CAGE HEIGHT (A) | 1.10 m |
| CAGE LENGTH (B) | 2.00 m |
| CAGE WIDTH (C) | 0.80 m |
| LENGTH (D) | 6.75 m |
| LENGTH WITHOUT CAGE (E) | - |
| HEIGHT (TRAVELLING POSITION) (F) | 2.00 m |
| WIDTH, MIN (G) | 1.40 m |
| WIDTH, MAX (G') | - |
| GROUND CLEARANCE (H) | 0.23 m |
| GROUND CLEARANCE MAX (H') | - |
| TRACK (L x W) (I) | 2.27 x 0.30 m |
| LENGTH OUTRIGGER STANDARD (J) | 3.75 m |
| WIDTH OUTRIGGER STANDARD (K) | 3.75 m |
| LENGTH OUTRIGGER NARROW (L) | 4.70 m |
| WIDTH OUTRIGGER NARROW (M) | 2.30 m |
| WIDTH OUTRIGGER MEDIUM (N) | 3.00 m |
| OUTRIGGER PLATE (\varnothing) | 0.20 m |



| WEIGHT | |
|-------------------------------|------------------------|
| TOTAL WEIGHT | 5400 Kg |
| TRAVEL CONFIGURATION PRESSURE | 2.55 kN/m ² |
| WORK CONFIGURATION PRESSURE | 3.31 kN/m ² |
| MAX OUTRIGGER FORCE | 23.54 kN |

| POWER SOURCES | |
|----------------------------------|---------------|
| STANDARD Diesel Engine | 28 kW |
| STANDARD Electric Motor | 220V - 2.3 kW |
| OPTIONAL Lithium Battery | 48V - 200 Ah |
| FUEL TANK CAPACITY Diesel Engine | 30 l |
| OIL TANK CAPACITY | 90 l |





CHASSIS

- Powerful track drive with hydraulic braking system
- Precise manoeuvring over sensitive radio control
- Rubber tracks with specially arranged profile providing optimum grip

STABILISATION

- Variable outrigger system with one side or both sides narrow or wide setup option

BOOM SYSTEM

- Telescopic boom + jib
- Articulated Jib 180°
- Turnable basket 180°
- Electric proportional (Danfoss) and radio controls
- Electric cage self levelling system
- Turret rotation with slewing ring

POWER SOURCES

- 220V electric motor
- 28 kW diesel engine with electronically regulated engine control
- Start/ Stop device for the engine in the cage

PRODUCTIVITY, SAFETY & QUALITY

- 110V (US) / 230V (EU) power socket in the cage
- High quality paint in RAL 9003 & RAL 2001
- Hand pump for emergency lowering
- Lock valves on hydraulic cylinders
- Relief valves protecting the hydraulic system from too high pressures
- Protective covers for all components
- Hour meter

OPTIONS

- Battery drive (lithium) 48V 200 Ah (R260HY)
- Outrigger self levelling system
- Outrigger pads
- Non marking rubber tracks
- Custom paintwork
- Electric pump for emergency lowering